

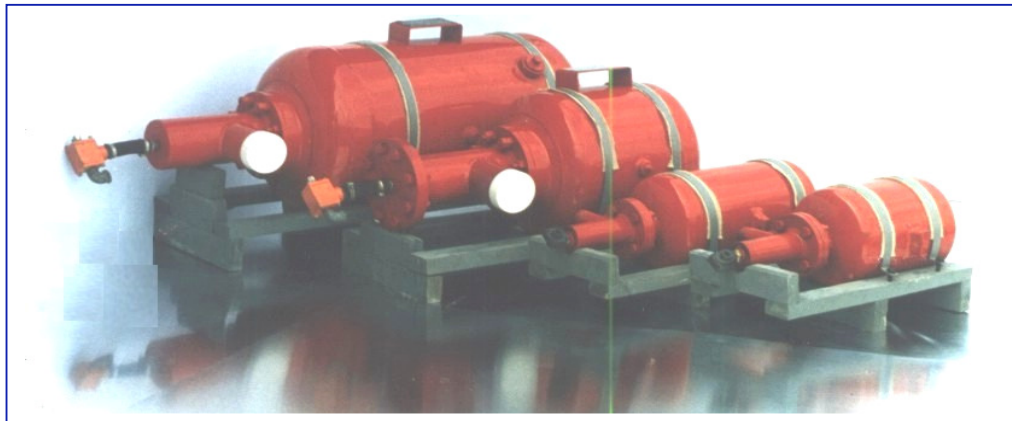


NATIONAL INSTITUTE FOR RESEARCH, DEVELOPMENT AND TESTING IN ELECTRICAL ENGINEERING

ICMET Craiova

200746 CRAIOVA - ROMANIA , B-dul Decebal No. 118A
Phone: +40 351 404 888; 40 351 404 889 FAX: 40 351 404 890
e-mail: market@icmet.ro; tunuri@icmet.ro
www.icmet.ro

AIR CANNON AND MICRO-CANNON SYSTEM - BIG BLASTER TYPE FOR SOLVING THE PROBLEMS OF BULK/PULVERULENT MATERIAL FLOW

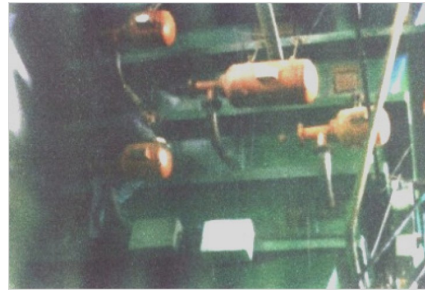


- **The air cannon and micro-cannon system** consists of a mechanical part, a pneumatic part, an electric drive part, an electric/electronic control part. The system is specific to each application.
- **The system** uses industrially/instrumentally compressed air at a pressure of 4÷10 bar, with better results for higher pressures.
- **The system** operates by principle of releasing the compressed air in sonic conditions/as a blast, generating a significant shockwave which produces effective work.
- **The system** ensures the flow of various bulk material and powder such as: coal, coke, slag, cement, gyps, limestone, ore, sand, sawdust, grain crops etc.
- **The system** removes the material deposition from the bunker hoppers, silos and conveyer pipe lines made of steel, concrete, wood or plastic.
- **The system** offers a guaranteed method for preventing the blockage and for unblocking the stocked bulk materials which are conglomerated or adhering to the walls. This helps the materials in flowing quickly and freely, restoring the original capacity of the bunker, thus ensuring the continuity in technological flow.
- **The air cannon and micro-cannon system** offers an efficient technology in the cement industry, for removing the depositions from the clinker roasting kilns and heat exchangers.

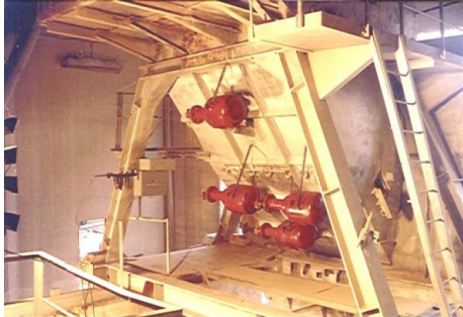
References / Main applicants



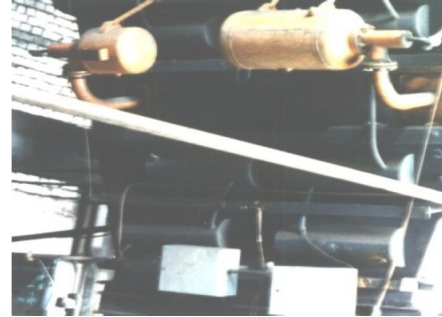
COAL CULM
Dust chamber
THERMOELECTRIC POWER STATION
BRASOV-ROMANIA



COAL
Metallic bunker
THERMOELECTRIC POWER STATION
GOVORA-ROMANIA



CLINKER
Burning kiln
HEIDELBERG CEMENT GROUP
CARPATCEMENT-FIENI-ROMANIA



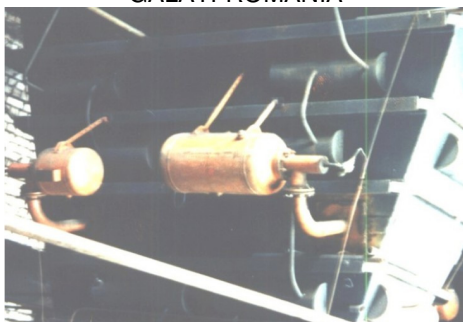
CLINKER
Heat exchanger
HOLTCIMENT SA
CAMPULUNG-ROMANIA



IRON ORE
Metallic bunker
ISPAT-SIDEX SA
GALATI-ROMANIA



RAW STOCK FOR CEMENT
Concrete silo
LAFARGE ROMCIM SA
HOGHIZ-ROMANIA



COAL
Metallic bunker
CTE 2X330 MW
PUCHENG-CHINA



RAW STOCK FOR CEMENT
Metallic bunker
PLANT ASONS CEMENT-PHILIPPINE